

“Change for Congo!”

What do Allison, Abigail, Michael, Sara Jane, Elena, Nathan, Holly, Macy, Joy, Ailidh, SarahGrace, Olivia, Davis, Medhi, and Ella have in common? They are musical friends of Woman, Cradle of Abundance, just like their music teacher, Mrs. Anna Preston.



These talented young people dedicated their piano recital to “Change for Congo” & collected an amazing \$191.46 for the sewing school in Kinshasa. Some are also learning sewing themselves, & they are excited to help the 2021 graduates realize their dreams when each one has her own machine.

Stretch Your Legs & Your Heart

Last year Miss Elena Preston (then 8) wrote a story for her school about “I help others by...” She described each person in her family: “My step mom, Anna, helps women in the Congo by inviting people to our house to do a 5K and the 5K gives money to the women in the Congo.” Anna & her big brother Nathan have run the 5K every year! It is a joyous tradition we look forward to again this month. Join Elena & Nathan & baby Clara (2) & all their new Friends of FEBA to “Run for Congo”!

Run for Congo!

Join Our Annual 5K-in-Place

Each year we do a 5K in early summer, June to July 4. As Elena Preston explained, their 5K is in person, but all of you are invited to join wherever you may be – & however you like.

Try out a new skill: skipping rope, or an old favorite: walking your best canine buddy. Invite a friend for a masked date in the park, or settle down in your rocking chair for 5K worth of doing good. Write & tell us about your exploits... Let's see who has the most creative – or unexpected!

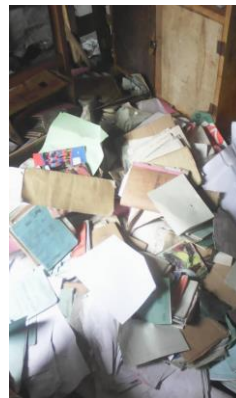
Swing **Horse** **Swim** **Bowl**
or slide, **or bike,** **or float,** **or hike.**

Suggested contribution for adult participants is \$25, for younger runners is 25 quarters.

BIG PROJECT ONE

One of our Big Projects for This Summer is to respond to a major natural disaster in Congo.

On May 22, the Mt. Nyiragongo volcano in N. Kivu, just outside Goma, erupted & devastated this already struggling city. The early death toll of 32 is only a small part of the story; enormous damage & long-lasting health issues will continue to cause death & destruction.



The teachers & children of CCS escaped, but their rented school building was used & destroyed by refugees. This is the third time in a year that the school has been torn up. (Earlier damage pictured at left.) Plans were already underway to relocate, but that is not yet possible. How will CCS finish this year? Special donations to rent a place & secure a minimal school supplies will be most welcome.

CHALLENGE FOR A TRACTOR! BIG PROJECT TWO

Ongoing disruption of the climate has made farm planning increasingly unpredictable. If the later rains are torrential (as is more & more common), unripe crops will rot in the ground. This problem is complicated if you miss the start of the planting season because you cannot rent a tractor in time.

During COVID, starvation was averted only by FEBA distributing food to its poorest members. Whatever other projects continue, food production must remain a key priority. FEBA's farm is a major employer in the local village, & villagers eagerly sign up to plant & weed & harvest. However the farm has become too large to be plowed by traditional means. For several years FEBA has rented one of the very few tractors in this region... but competition is fierce & the tractor has not come on time. Even when Maman Monique paid in advance, the FEBA farm was bumped down the queue when a better offer came along. The solution, she decided, was to buy a tractor, which could then also be rented out when not in use & thus serve the neighboring farms.

So our big project is buying a tractor! In Kinshasa that would cost \$45,000; in Dubai, a used tractor may sell for as little as \$15,000.

An anonymous donor has pledged \$15,000, as a match-challenge. About \$10,000 more will be needed to cover accessories (e.g., plow attachment), a buying trip to Dubai, & transport & customs for the tractor.

Can you see yourself donating \$100? It will become \$250. Or \$500? It will become \$1250. Or \$1000? It will become \$2500.

Help FEBA Feed More People!

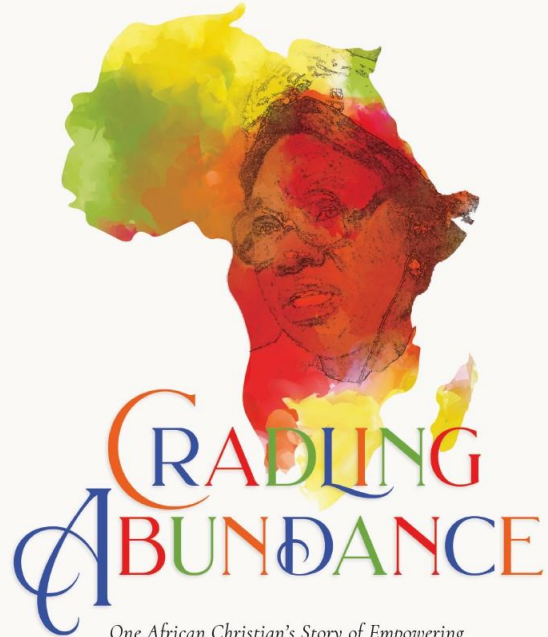
SHOP FEBA!

Brighten up your day & your wardrobe with some exciting new colors – a splash of Africa from FEBA sewing creations! Some fantastic new masks are just in from Kinshasa.

Our SHOP on the website is smart for summer, thanks to the talents of Ms. Emily Forster. Drop in & find just the right new accessory for your holiday! Or pick up some masks for Father's Day for stylish safety for those family & friend gatherings we have all missed.

Check out www.WomanCradleofAbundance.org & see what SHOPping is really like!

MONIQUE MISENGA NGOIE MUKUNA
WITH ELSIE TSHIMUNYI MCKEE



*One African Christian's Story of Empowering
Women and Fighting Systemic Poverty*

<https://www.ivpress.com/cradling-abundance>

CONTRIBUTE OR GET INVOLVED

Contribute: Donate securely via PayPal at www.WomanCradleofAbundance.org/donate or on FEBA, Inc., on Facebook.

Please designate "Sewing School" or "Goma School" or "Women's Center Orphans" or "Farm Needs," or "Sustaining Gift" to support ongoing work.

Checks payable to Woman, Cradle of Abundance can be mailed to the following address:

Woman, Cradle of Abundance
attn: John McGlaughlin, Treasurer
9 Lytle St.
Princeton, NJ 08540

Volunteer: Contact Cheryl Ciaranca, Community Outreach Coordinator, at cciaranca@gmail.com or 215.292.3290 to discuss ways to partner with Woman Cradle of Abundance.